

## Q100L Series



Q100L



Q100LW

### PRODUCT SPECIFICATION

Q100L | Q100LW | Q100LP

**Materials** Lens-PC, housing-ABS, mounting bracket-PC

**Ambient operating temperature** -30°C to +50°C

**Volume** Max.80dB at 1m

**Protection rating** IP65

**Flashing rate** 60-80/min

**Compliant with RoHS directive**

- Small-sized signal light of Ø100mm with attractive appearance
- Shock and vibration-resistant, maintenance reduced with long-lasting energy-efficient LED light bulb
- Selectable mounts available depending on your application environment (direct mount, wall mount, pole mount)
- Features high visibility with special diffusive lens and direct LED light distribution system
- Built-in switch for selection between steady and flashing light mode
- Can select between standard and built-in buzzer type depending on installation environment

### Q100L / Q100LW / Q100LP LED Steady/Flashing Signal Light

Model number	Voltage	Current	Certificates	Weight	Color
Q100L	DC12V-24V	Max.0.270A	CE UL	Q100L-0.28kg	● R-Red
Q100LW				Q100LW-0.70kg	● A-Amber
Q100LP	AC110V-220V	Max.0.080A		Q100LP-1.22kg (Weight Above Include QZ24)	● G-Green ● B-Blue

· Various mounting options are available

※ DC type model has a free-voltage range of 10V-30V.

※ AC type model has a free-voltage range of 100V-240V.

※ UL Listed: DC12V-24V

### Wiring Instructions

- External Power line - UL1015 AWG18(0.75sq) x 2C 400mm
- This product can be wired regardless of polarity.

### Customization · Customized pole length available

### Mounting Bracket

Standard	LB24	LW24	QZ24	SZ24	QL24	SL24
Steel	Steel	ABS	ABS	Al	ABS	Al

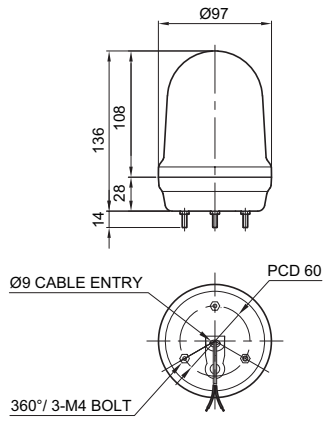
Please refer to [Tower Light Mounting Bracket] on this catalogue for detailed dimensions.



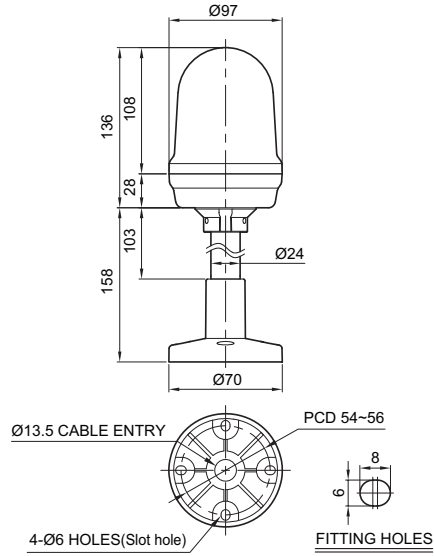
## Technical Diagram

Units: mm

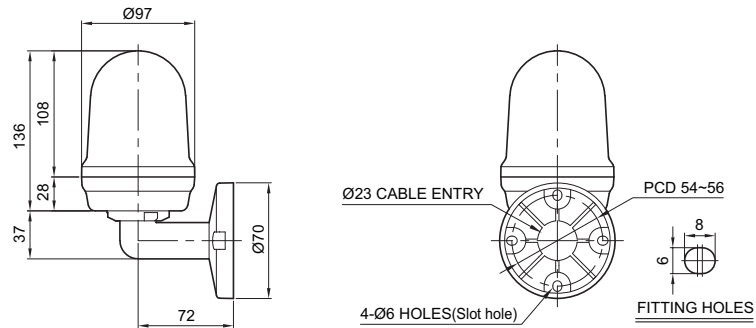
·Q100L



·Q100LP



·Q100LW



Q100LP  
(SZ24 Bracket)

## Ordering Specification

Q100LP	-	BZ	-	12/24	-	R	-	SZ24
[Model number]		[Buzzer option]		[Voltage]		[Color]		[mount bracket]
Q100L Q100LW Q100LP		(None) - No buzzer BZ - Built-in buzzer		12/24-DC12V-24V 110/220-AC110V-220V		● R-Red ● A-Amber ● G-Green ● B-Blue		(None) - Standard Bracket -LB24 -LW24 -QZ24 -SZ24 -QL24 -SL24